

**PANICKKER SWITCHGEAR**  
**THANDALAM P.O., SRIPERUMBUDUR.**

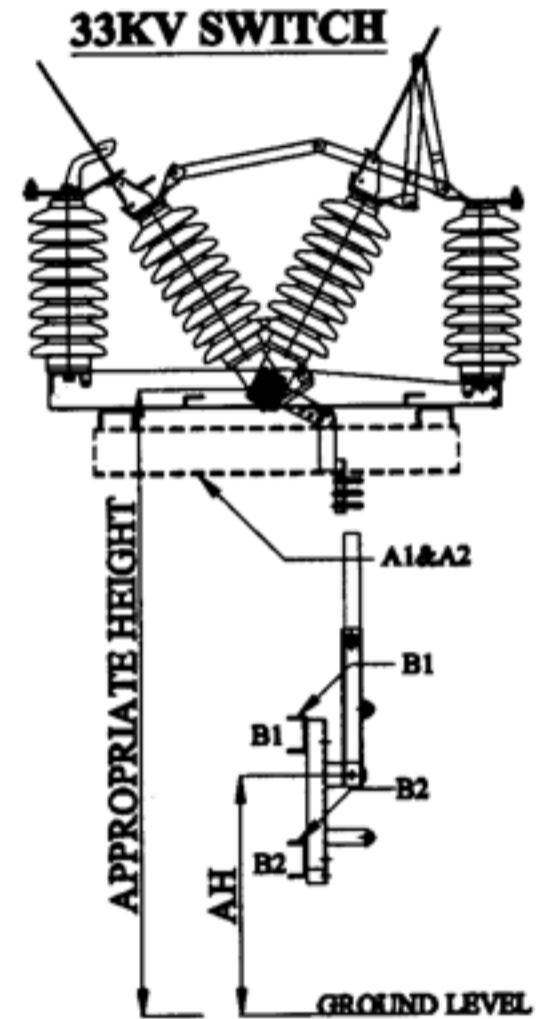
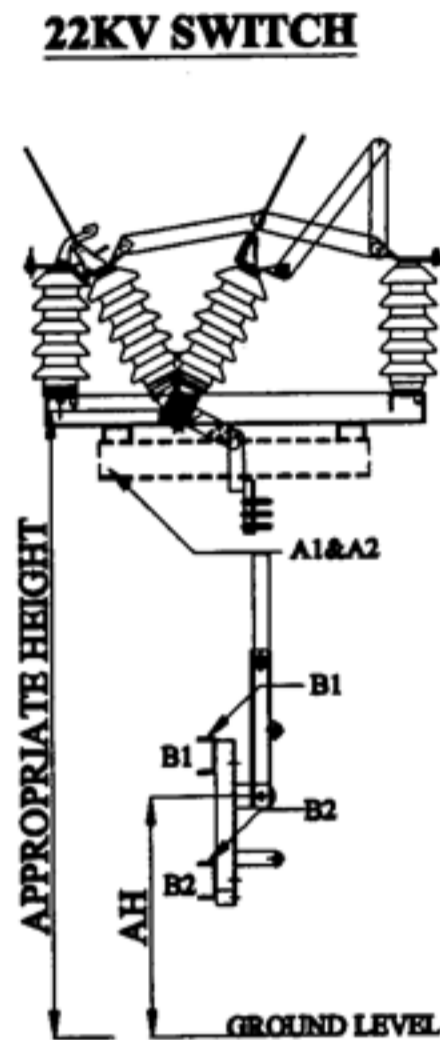
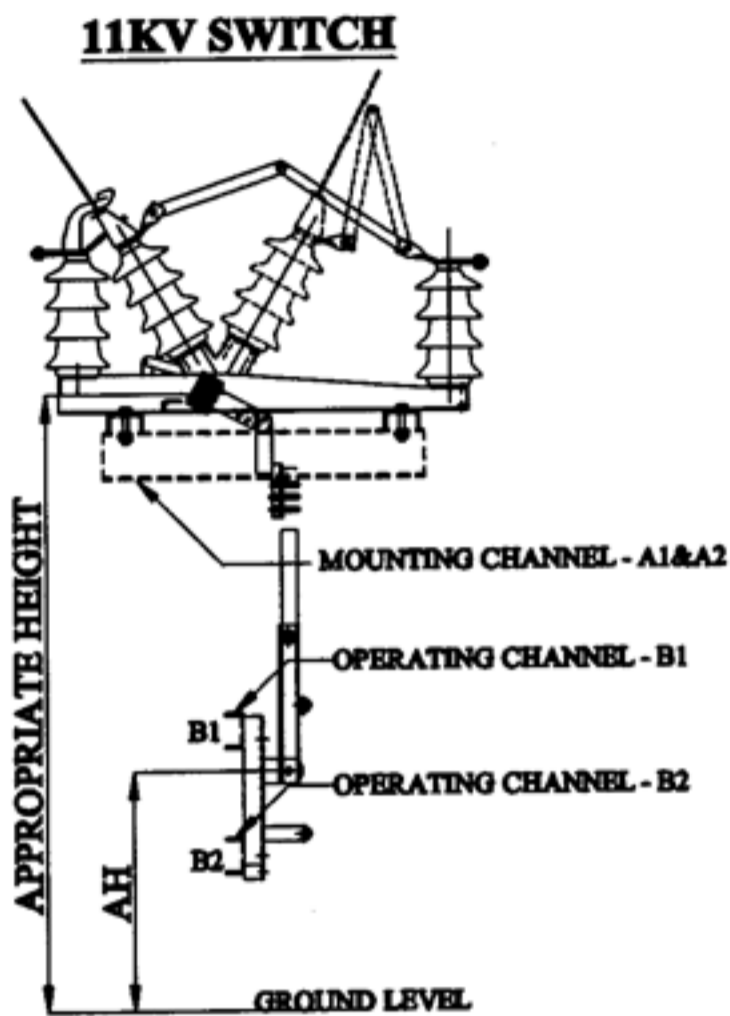
**AIR BREAK SWITCH**  
**TYPE - FM**  
**HORIZONTAL/VERTICAL**

**INSTRUCTION FOR**  
**MOUNTING/INSTALLATION OF**  
**ISOLATOR**

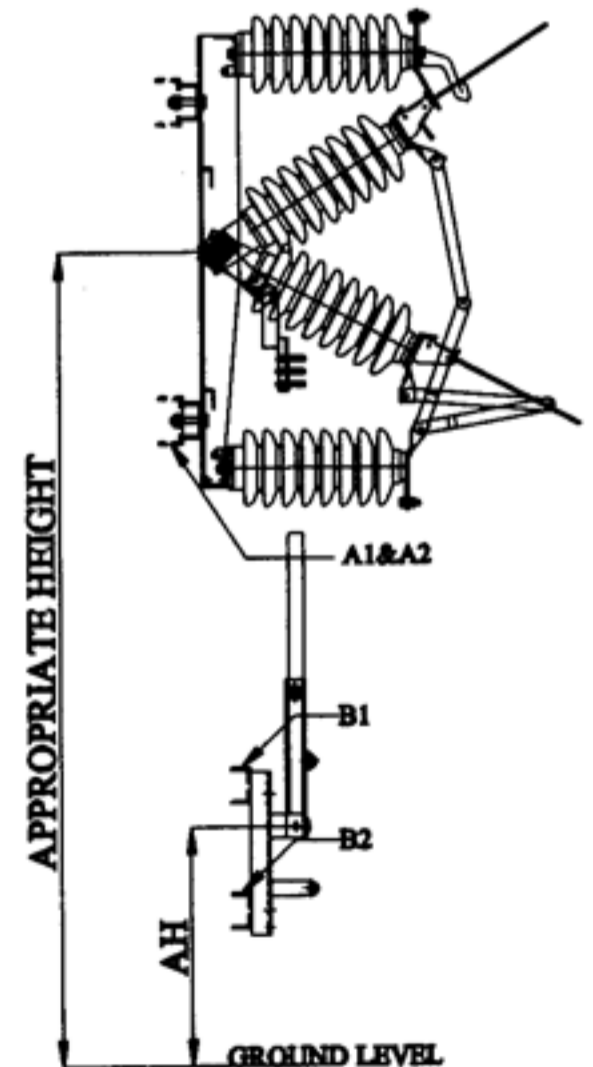
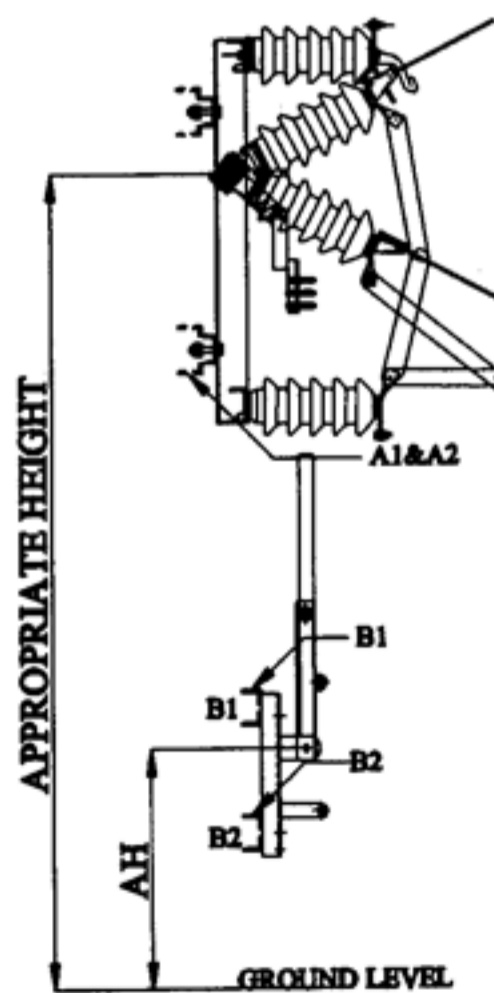
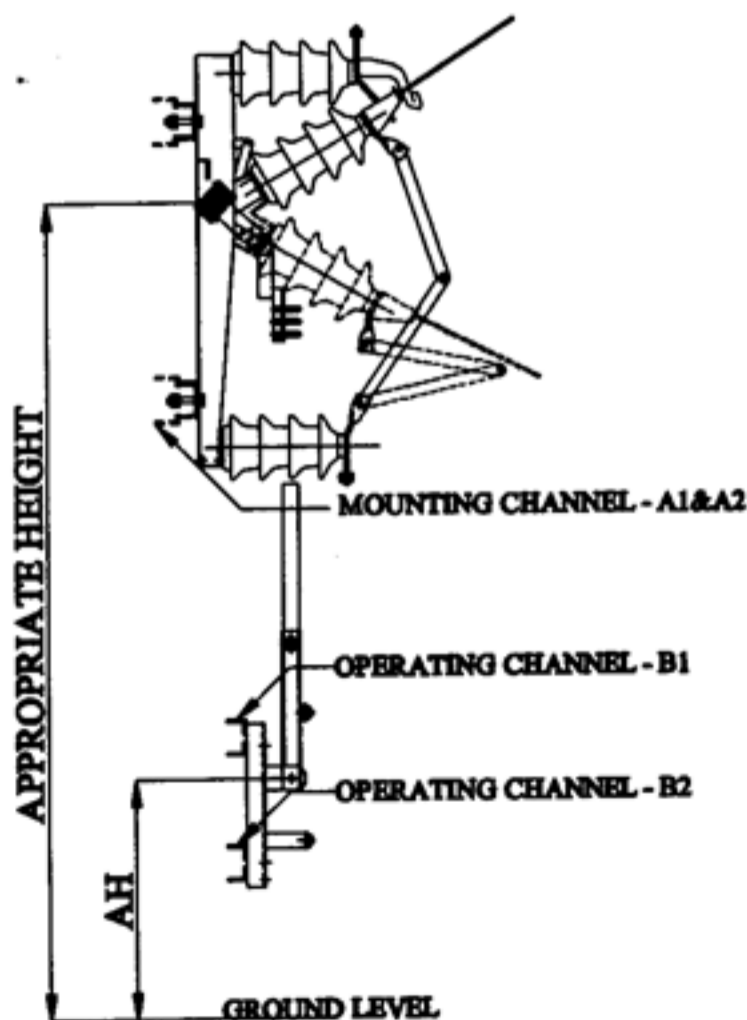
# DETAILED INSTRUCTION FOR MOUNTING / INSTALLATION OF THE AIR BREAK SWITCH - HORIZONTAL/VERTICAL TYPE

## STAGE-1 [Assembly for Switch and Operating Handle]

### HORIZONTAL MOUNTING:-



### VERTICAL MOUNTING:-



**NOTE:-**  
**MOUNTING CHANNELS A1,A2,B1&B2 OR NOT IN OUR SCOPE.**

**DETAILED INSTRUCTION FOR MOUNTING / INSTALLATION**  
**OF THE AIR BREAK SWITCH - HORIZONTAL/VERTICAL TYPE**

**1) Take the switch from the wooden case carefully by using Fork Lift.**

**2) S1,S2 are switch channels, A1,A2,B1&B2 are mounting channels for switch and handle base respectively.**

**3) Depends upon the KV ratings, the distance between the switch channels S1 & S2 varied.**

**4) For Horizontal : The distance between the switch channels S1 & S2 is same as for drilled the holes in the channels A1 & A2 separately.**

**For Vertical : The distance between the holes in the switch channels S1 (or) S2 is same as for drilled the holes in the channels A1 & A2.**

**NOTE:— The channels A1 ,A2 & B1,B2 give only the details of holes and not the channels size & length, the mounting channels length and size can be calculated incorporating the fixing hole details.**

**5) Drill the hole as 18Ø in the channels B1,B2 and maintain the distance between the two holes as 260mm.**

**6) Mounting channels A1,A2,B1,B2 are welded or clamped in the poles in either side at appropriate height required.**

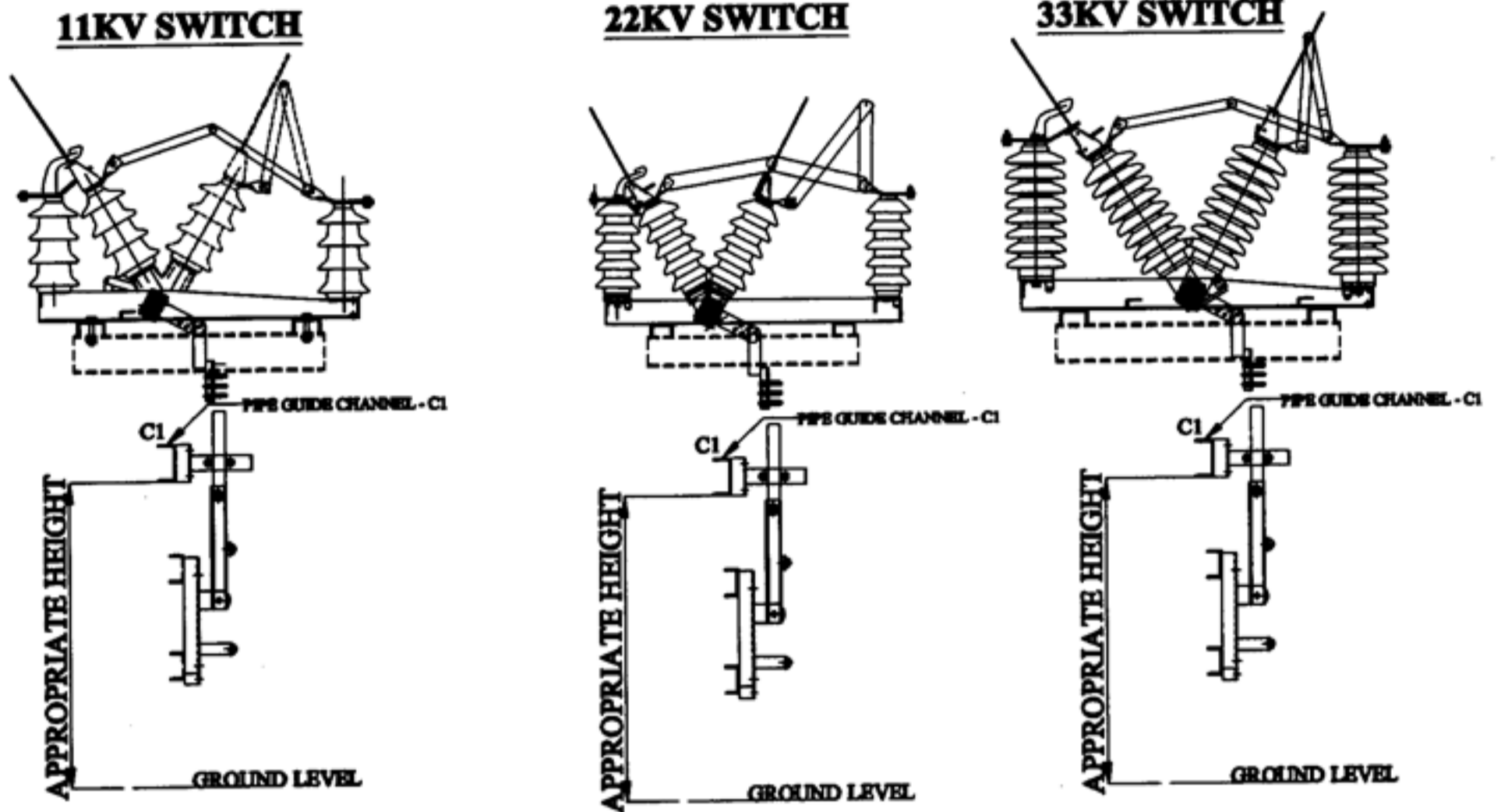
**7) There are three pair of holes in the operating handle, First pair is already revited the handle with handle base. One end of the operating pipe is connected to second pair of holes, the third pair is already welded on either sides of the handle grip.**

**8) After welding or clamping the channels (A1,A2 & B1,B2) in the poles handle base and switch are tightened to the channels with bolts and nuts.**

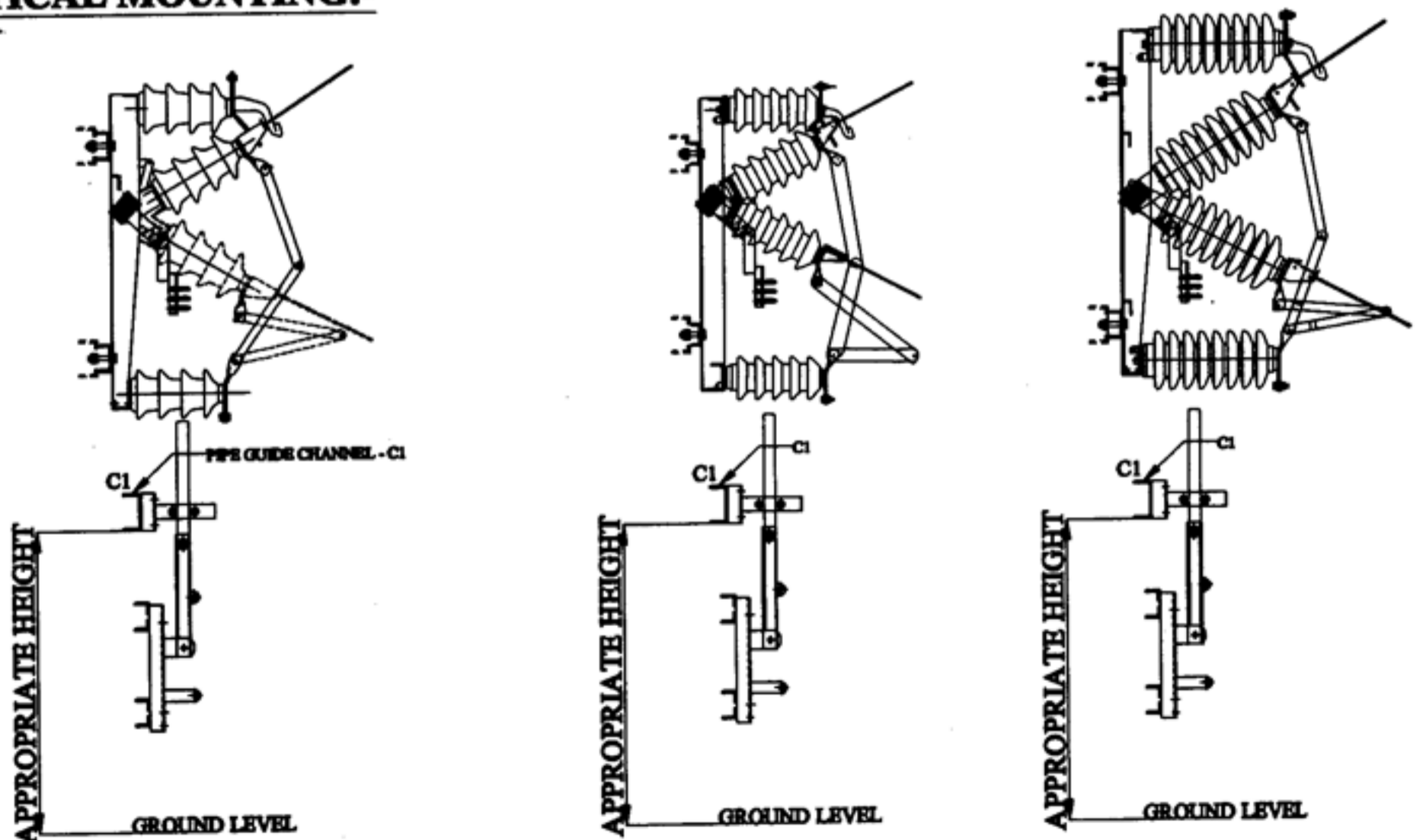
**DETAILED INSTRUCTION FOR MOUNTING / INSTALLATION**  
**OF THE AIR BREAK SWITCH - HORIZONTAL/VERTICAL TYPE**

**STAGE-2**  
**[Pipe Guide Assembly]**

**HORIZONTAL MOUNTING:-**



**VERTICAL MOUNTING:-**



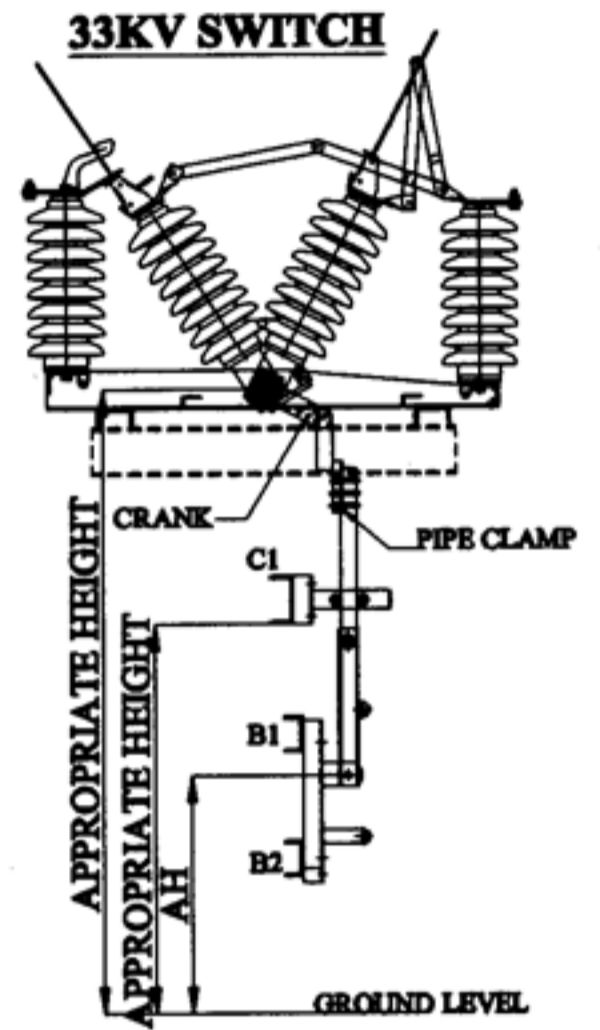
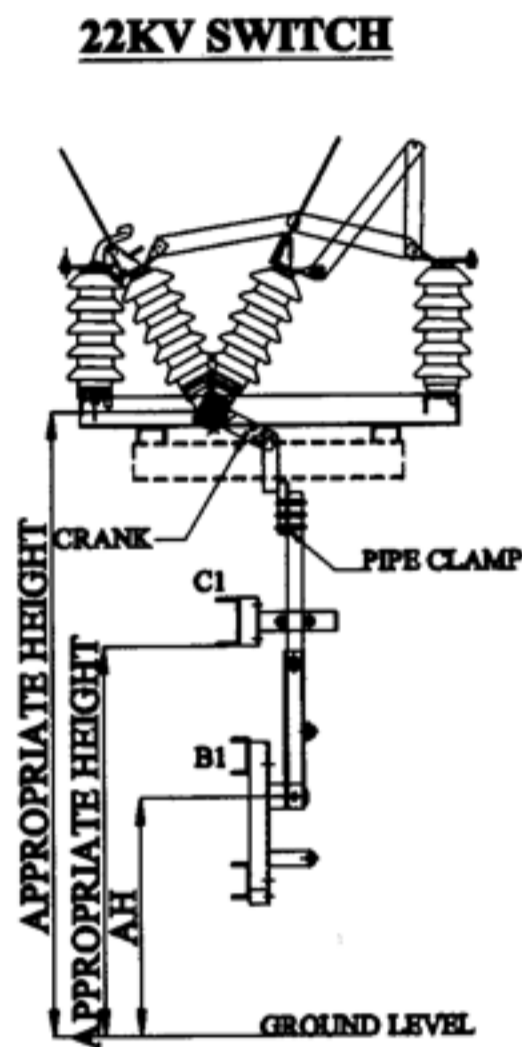
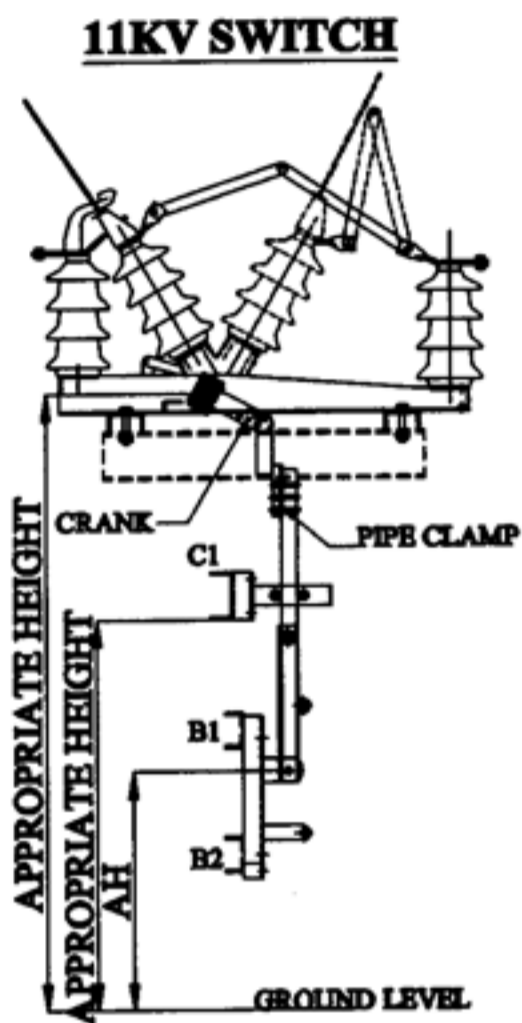
**DETAILED INSTRUCTION FOR MOUNTING / INSTALLATION**  
**OF THE AIR BREAK SWITCH - HORIZONTAL/VERTICAL TYPE**

- 1) C1 is the mounting channels for the pipe guide.**
- 2) Drill the holes as 15Ø in C1 and maintain the distance between the holes in C1 as 70mm. to an appropriate height, the welded (or) clamped channels C1 is fixed to the pole.**
- 3) In the pipe guide, there are four pairs of holes. Two cylindrical pins are fixed to any two pair of the above holes.**
- 4) In between these two pins only, operating pipe will travel.**
- 5) Insert the pipe guide assembly to the operating pipe.**
- 6) In the pipe guide in addition to two 12Ø holes are present which is used for clamping the pipe guide to the mounting channel (C1).**
- 7) Now, switch is ready with crank and mounting assembly is ready separately.**

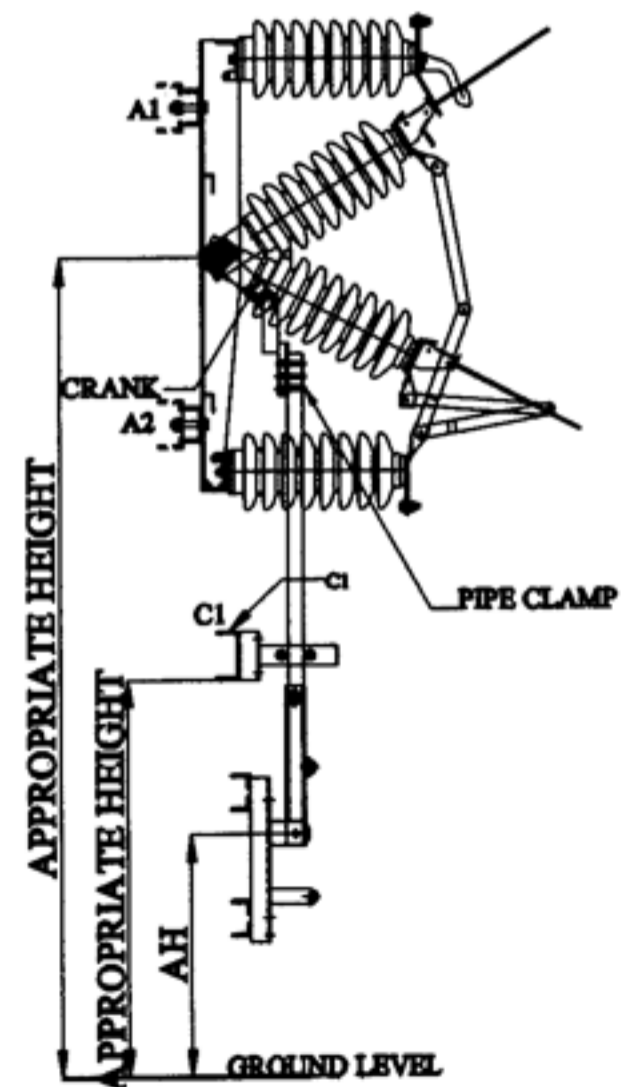
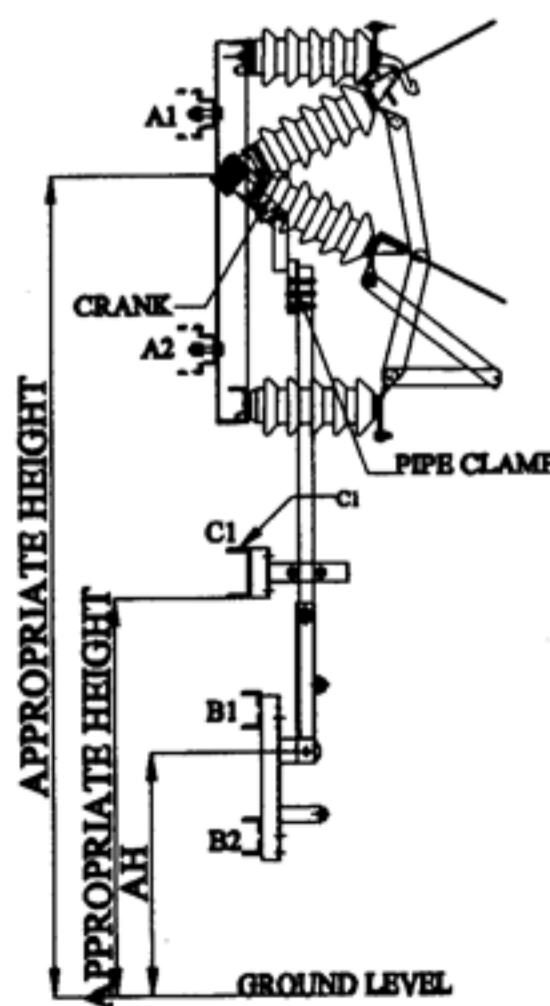
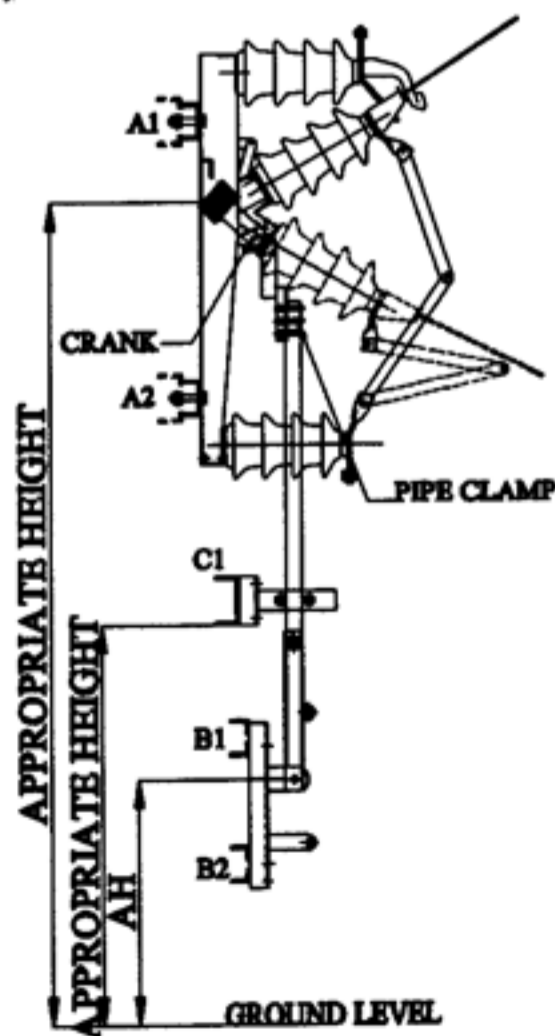
# DETAILED INSTRUCTION FOR MOUNTING / INSTALLATION OF THE AIR BREAK SWITCH - HORIZONTAL/VERTICAL TYPE

## **STAGE-3** **[Final Assembly]**

### **HORIZONTAL MOUNTING:-**



### **VERTICAL MOUNTING:-**



**DETAILED INSTRUCTION FOR MOUNTING / INSTALLATION**  
**OF THE AIR BREAK SWITCH - HORIZONTAL/VERTICAL TYPE**

- 1) The operating pipe (5500mm) is inserted in between the U-clamp present in the pipe clamp assembly.**
- 2) The crank is already fitted to the operating shaft of the switch at suitable angle. (Angle can be changed by just loosening the bolts.)**
- 3) These two are connected by matching, the only hole in the pipe clamp with any of the six holes in the crank and tightened.**
- 4) Pad lock arrangement is provided in the assembly of handle and handle base.**
- 5) If the above process is satisfied, supply is given to the switch and then proceed your process.**

---

---

**PANICKKER SWITCHGEAR PRIVATE LIMITED,  
THANDALAM POST,  
SRIPERUMBUDUR-602 105,  
TAMIL NADU, INDIA.**  
Phone: +91-44-27156245/27156175  
Fax: +91-44-27156176/24754596  
E-mail: [info@panickker.com](mailto:info@panickker.com)  
Web: [www.panickker.com](http://www.panickker.com)